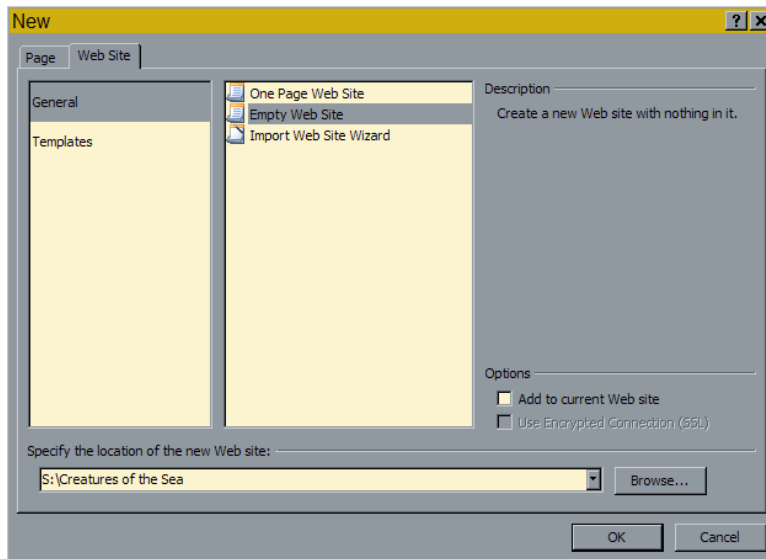
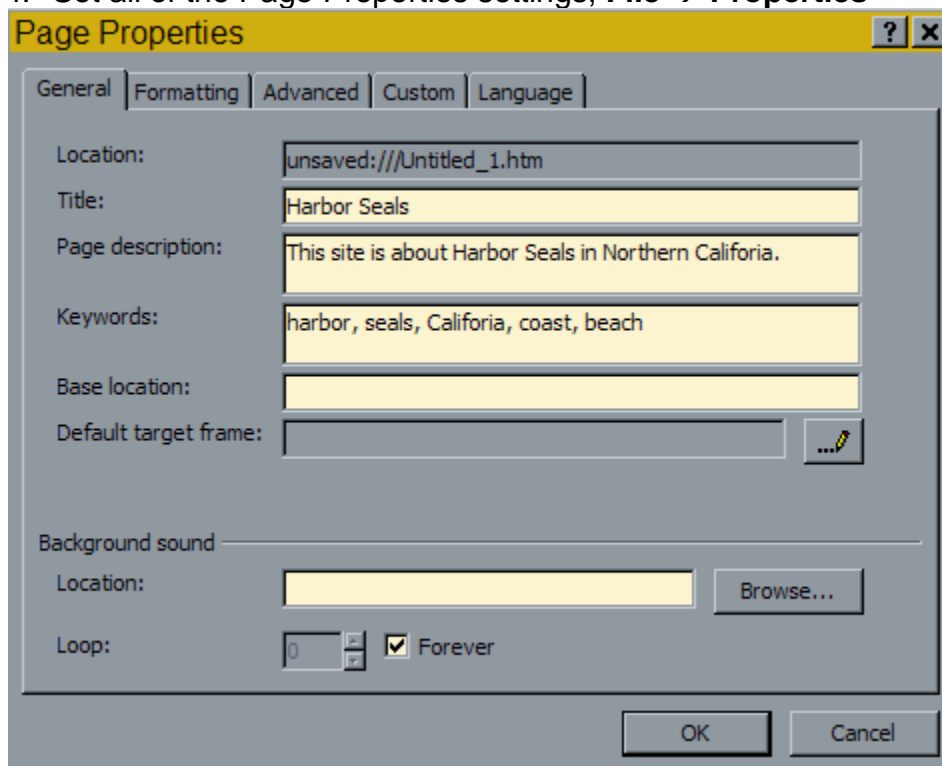


Expression Web – Quickstart Guide

1. **Tools | Page Editor Options**, and specify preferences for under general and authoring tabs.
2. Choose **New→Web site →General →Empty Web Site**. Name it **“S:\Creatures of the Sea”**



3. Create a new HTML document, choose **File→New→Page →HTML**
4. Set all of the Page Properties settings, **File → Properties**



Expression Web – Quickstart Guide

5. Under the **Formatting** tab in this same dialog, you can specify text, background, and link colors for your page. For this exercise, leave the background and text colors set to white and black, but change the link colors as follows. **Hyperlink | Maroon, Visited Hyperlink | Silver, Active Hyperlink | Yellow, and Hovered Hyperlink | Yellow.**
6. Under the **Advanced tab**, set all Margins to 0.
7. Under the **Custom** tab, Add a meta tab for **Author** and name it **Your Name**.
8. Under the **Language** tab, Mark current document as **English U.S.**

Layers in Expression Web are created using div tags with CSS and absolute positioning. That means you can place them anywhere on the page specifying to the pixel where they should be placed and they will remain in precisely that location. Once you've inserted a layer into your page, you can insert any element, such as a graphic or some text, into the layer.

Layers are a popular choice among designers because they provide such precise layout control, but you should know that this is only one of many ways to create designs using CSS in Expression Web.

9. To add a layer to a page, click to select the **Layer** icon in the **Toolbox** task pane and drag it onto the page. The layer will automatically appear in the top left of the page. Use the **CSS Properties** task pane to specify its properties:
 - a. Height: 105px
 - b. Width: 800px
 - c. Top: 0
 - d. Left: 0
 - e. Position: absolute
 - f. Z-index: 1
10. Open the Z: drive Expression Web Training folder. Drag the two folders (extras & web_ready) into the Folder pane of your website.
11. Insert an image, choose **Insert → Picture → From File** and select **seals-top.jpg** from the web_ready folder.
12. In the **Accessibility Properties** dialog, enter the Alternate Text of the photo "Harbor Seals on the beach."

Expression Web – Quickstart Guide

13. Add a new layer and set its properties to:
 - a. Height: 35px
 - b. Width: 800px
 - c. Top: 105
 - d. Left: 0
 - e. Position: absolute
 - f. Z-index: 2

14. Insert another image into the second layer selecting the file **seals-nav.jpg**. Enter Alternate Text as “Navigation.”

15. Add a new layer and set its properties to:
 - a. Height: 150px
 - b. Width: 100px
 - c. Top: 175
 - d. Left: 3
 - e. Position: absolute
 - f. Z-index: 3
 - g. Enter the text:

Sea Otters
Seals
Water Fowl
Sea Lions

16. Add a new layer and set its properties to:
 - a. Height: 398px
 - b. Width: 300px
 - c. Top: 175
 - d. Left: 120
 - e. Position: absolute
 - f. Z-index: 4

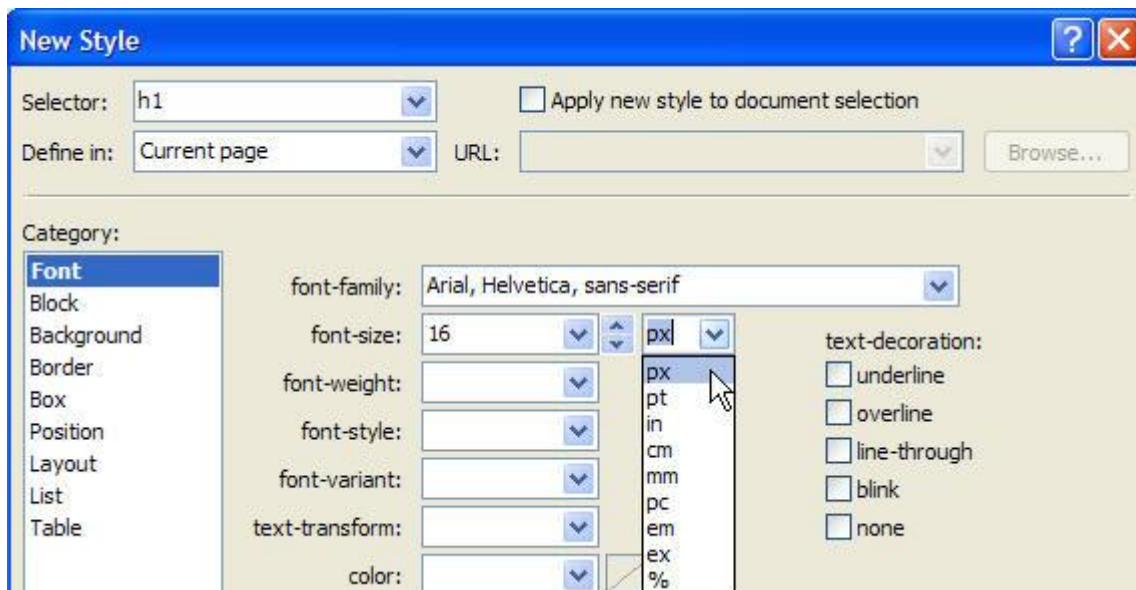
17. Insert an image into the fourth layer selecting the file **seals-bg.jpg**. Enter Alternate Text as “Big Seals.”

18. Add a new layer and set its properties to:
 - a. Height: 410px
 - b. Width: 360px
 - c. Top: 175
 - d. Left: 440
 - e. Position: absolute
 - f. Z-index: 5

19. Open the Word file name **seals.doc** in the extra folder. Copy all of the text and switch back to Expression Web.

Expression Web – Quickstart Guide

20. Click to place your cursor in the fifth layer and choose **Edit → Paste Text** to open the paste text dialog. This feature provides more options for how you include formatting when you paste text into Expression Web. Select the last option: Normal paragraphs without line breaks.
21. Remove the extra paragraph tags (3) between the paragraphs.
22. Edit the headline to the story "Harbor Seals Lounge on California's Beaches." Select the paragraph <p>, From the Common toolbar choose Heading 1 <H1> and the text will automatically resize and become bold.
23. Change the Heading 1 style by creating a new CSS Style.
 - a. Click **New Style** link in the **Apply Styles** task panes.
 - b. In the **New Style** dialog, choose the h1 selector
 - c. **Font-Family:** Arial, Helvetica, sans-serif
 - d. **Font-size:** 16px
 - e. When you click **OK** the new style is automatically applied and the headline you formatted with the h1 tag automatically changes to reflect the new style.



Expression Web – Quickstart Guide

24. Add an image to the layer with the story and headline:
 - a. First, click to place your cursor at the beginning of the first paragraph in the story, just before the words "Just off California Highway 1..."
 - b. Choose **Insert → Picture → From File**.
 - c. Select the image called **seals-small.jpg** and enter an Alternate Text of "Harbor Seals on the beach."

25. Create a style to align that image so the text wraps around it:
 - a. Choose **New Style** from the **Apply Styles** task pane.
 - b. In New Style dialog, enter **.img-right** in the Selector field. (All class styles must begin with a dot or period)
 - c. In the **Layout Category**, set the **Float** to **right**.
 - d. In the **Box Category** add **Margin** space
 - i. Uncheck the **Same for all** box above **Margin**
 - ii. Left margin: 10
 - iii. Bottom margin: 10
 - iv. Top margin: 0
 - v. Right margin: 0
 - e. Click **OK** to create the new style.

26. Select the image of the seals that you inserted into the layer with the story and headline. Then in the Apply Styles task pane, click to select the .img-right style.

27. Create a new style:
 - a. Selector: paragraph (p)
 - b. Font: Arial, Helvetica, Sans-Serif
 - c. Font-Size: 16px

28. Create a new style:
 - a. Selector: .blue
 - b. Color: blue
 - c. Apply to paragraphs

29. Create links to the other pages in your site.
 - a. Click and drag to select the **Sea Otters** text in the small layer in the left side of this design.
 - b. Choose **Insert → Hyperlink**
 - c. Select or type the **seaotters.htm** page
 - d. Click OK and the link is automatically set.
 - e. Repeat for the other pages.

Expression Web – Quickstart Guide

30. Create a new external link:
 - a. Enter the words "California Nature Conservancy" at the bottom of the list. Then click and drag to select the text.
 - b. Choose **Insert**→**Hyperlink**
 - c. Enter the full URL of the site in the **Address** field
<http://www.nature.org/>.
 - d. Click **OK** and the link is automatically set.

31. Add a Javascript to display the current date:
 - a. Add a new layer
 - b. Open the code view
 - c. Copy and Paste the Javascript from the **Time and Date.txt** file
 - d. Apply the .Style1 (center).
 - e. Preview in browser.