

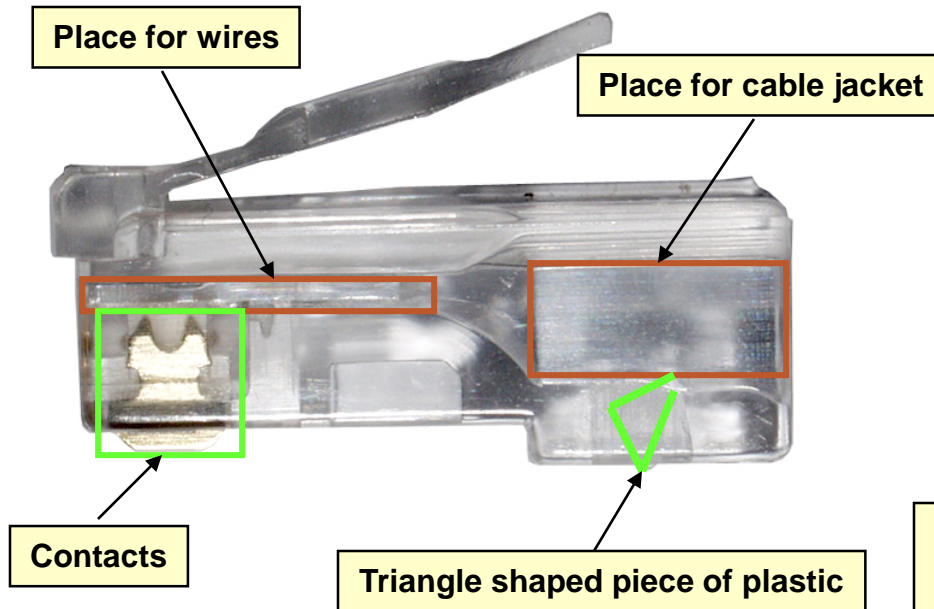


Twisted Pair Cable Crimping

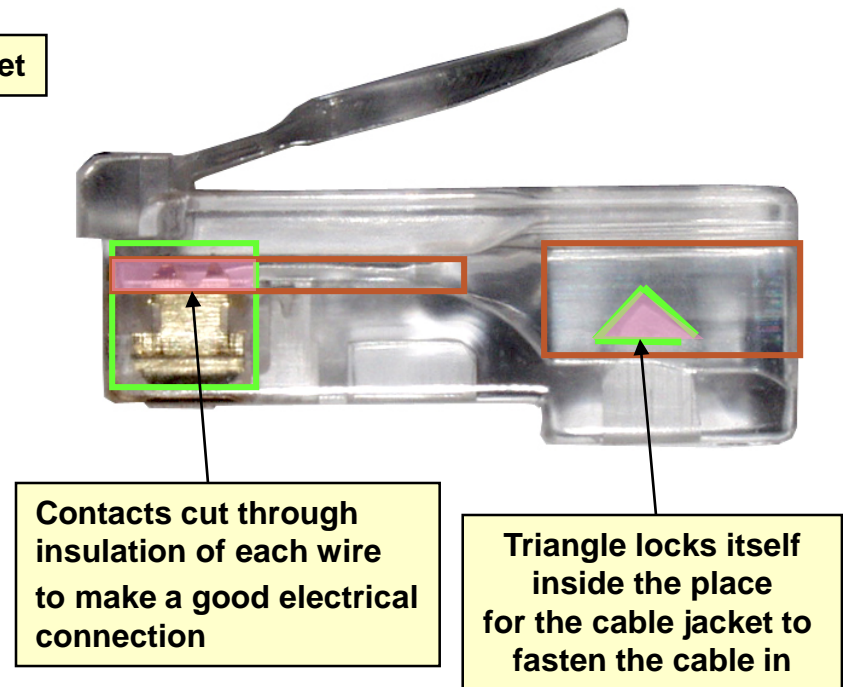
TELECOMMUNICATIONS AND NETWORKING

Function of RJ45 plug

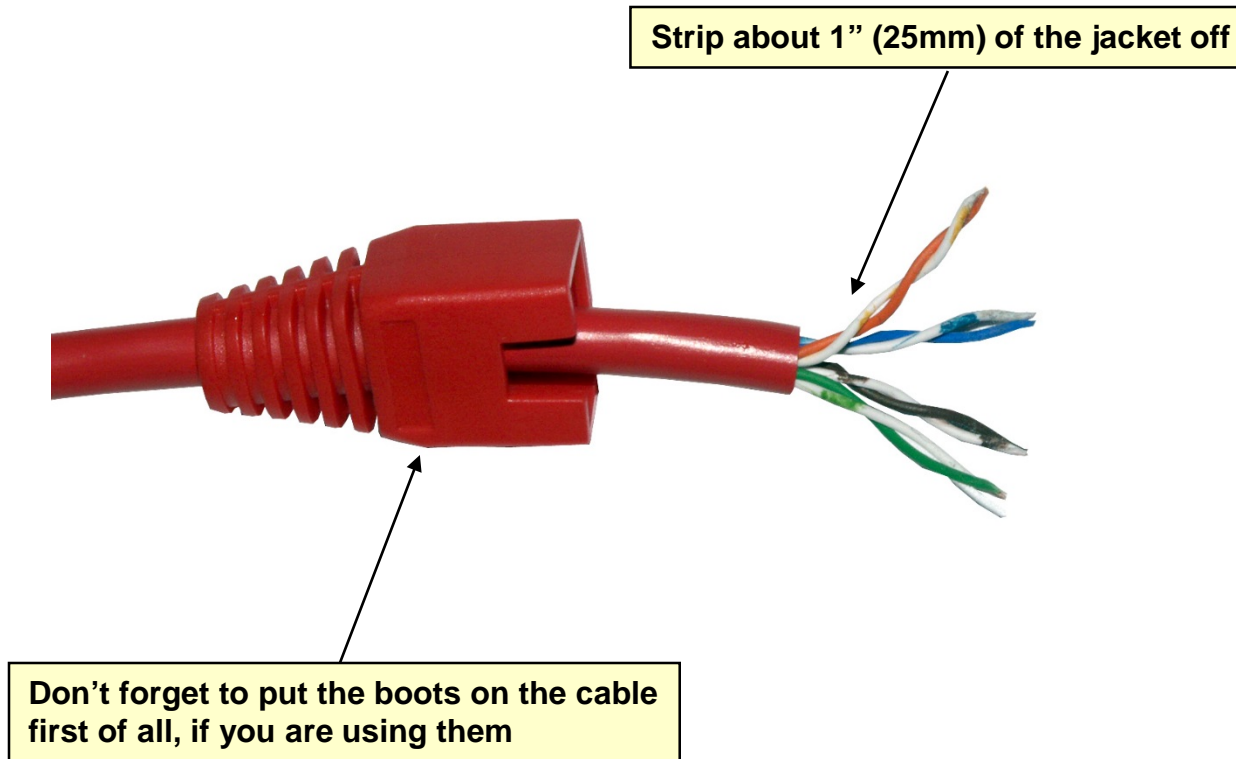
New (not yet crimped) connector



Crimped (without cable) connector



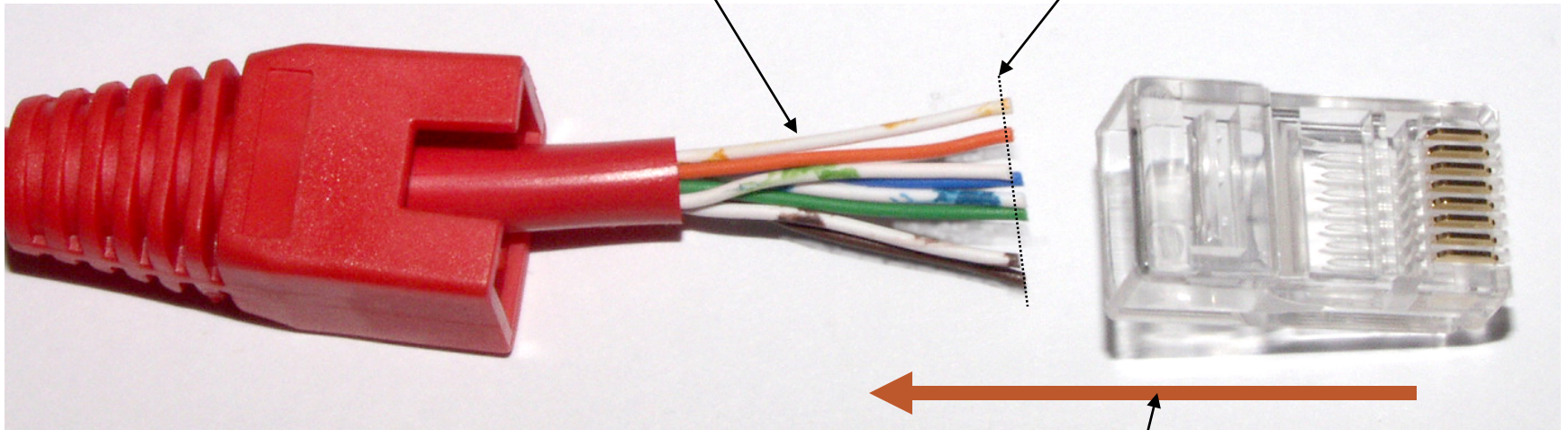
Step1



Step 2

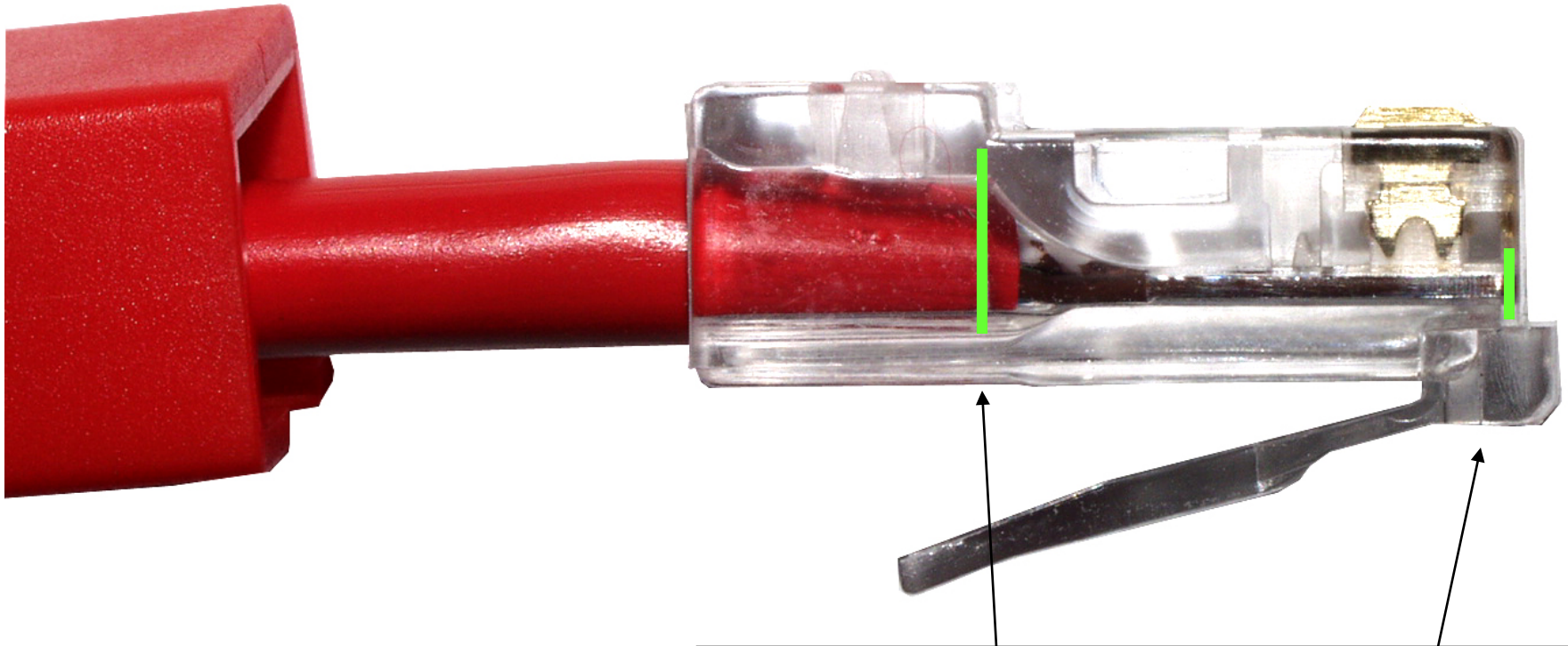
Untwist and reorganize the wires to reflect one of the T568 standards

Cut the wires to have 3/8" to 1/2" (12 to 18mm) from the jacket edge



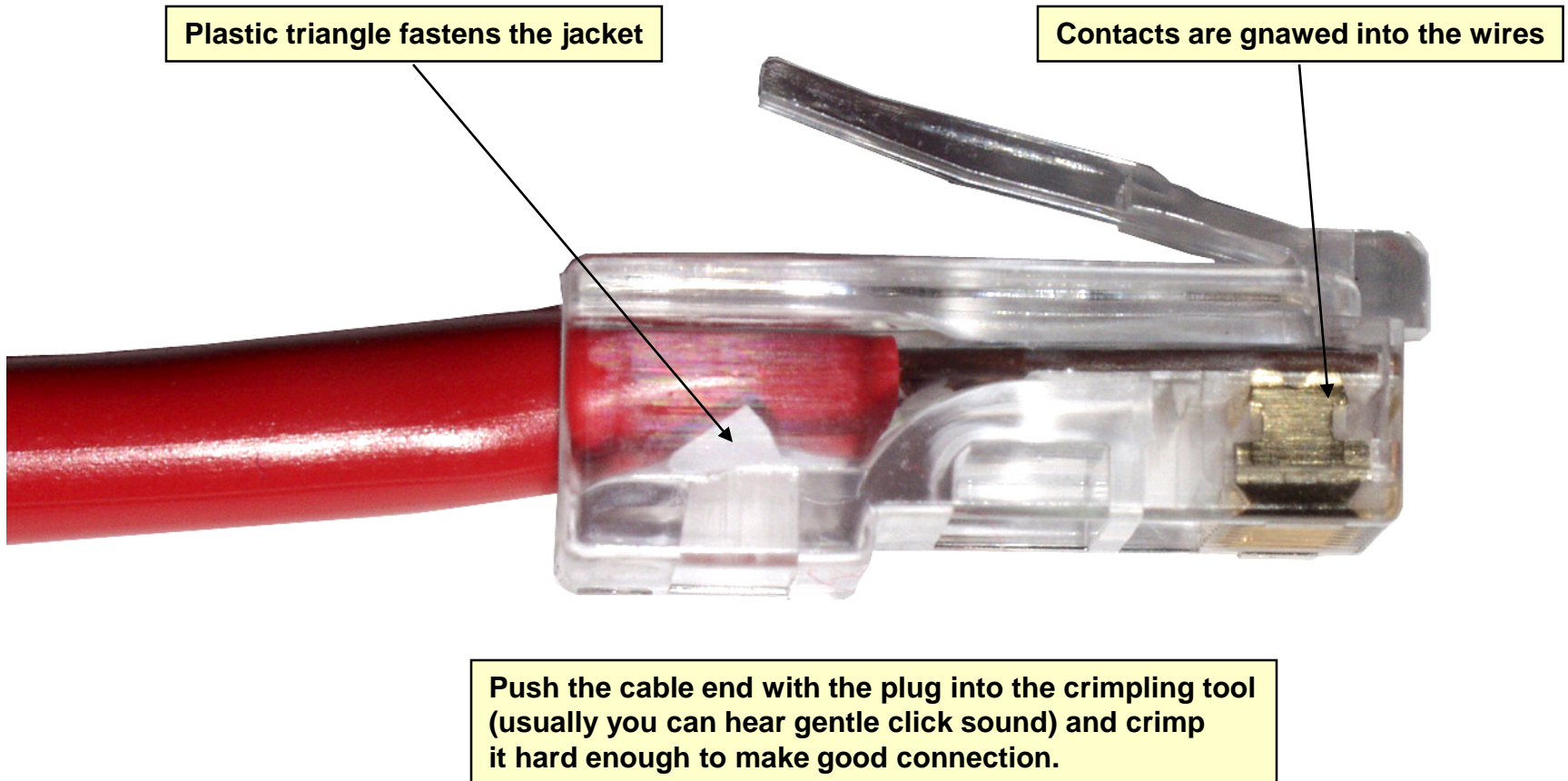
Place the RJ45 plug on the cable.
Be sure to keep the order of the wires!

Step 3



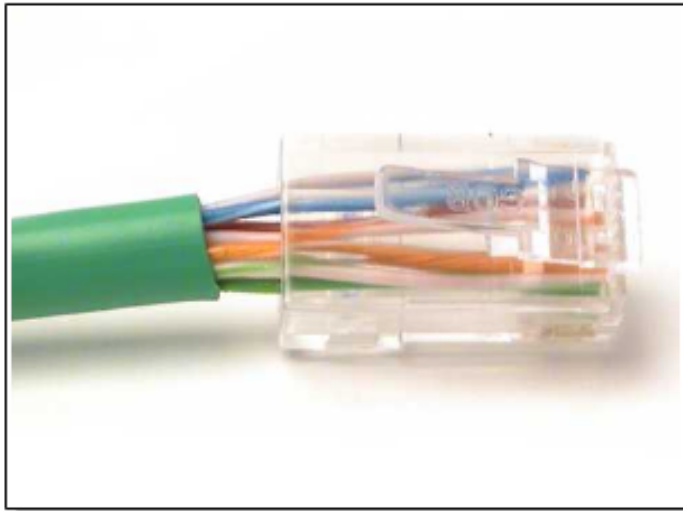
Gently push the plug onto wires. Make sure, that all the wires are on the end of the plug and the jacket is inside the plug's space for the jacket. Also look at the wires if they are still in the correct order.

Step 4

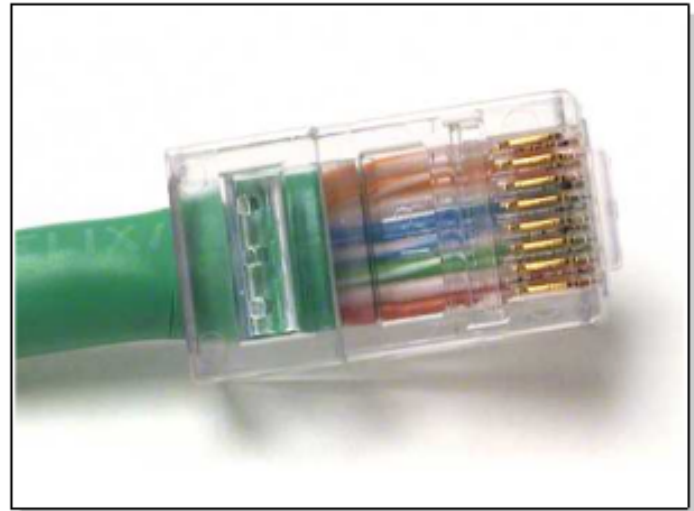


Repeat the same steps on the opposite side of the cable, and then test the cable in the cable tester.

Biggest Mistakes



Bad Connector - Wires are untwisted for too great a length.



Good Connector - Wires are untwisted to the extent necessary to attach the connector.